

iWRAP 6.1 *Bluetooth*[®] Software

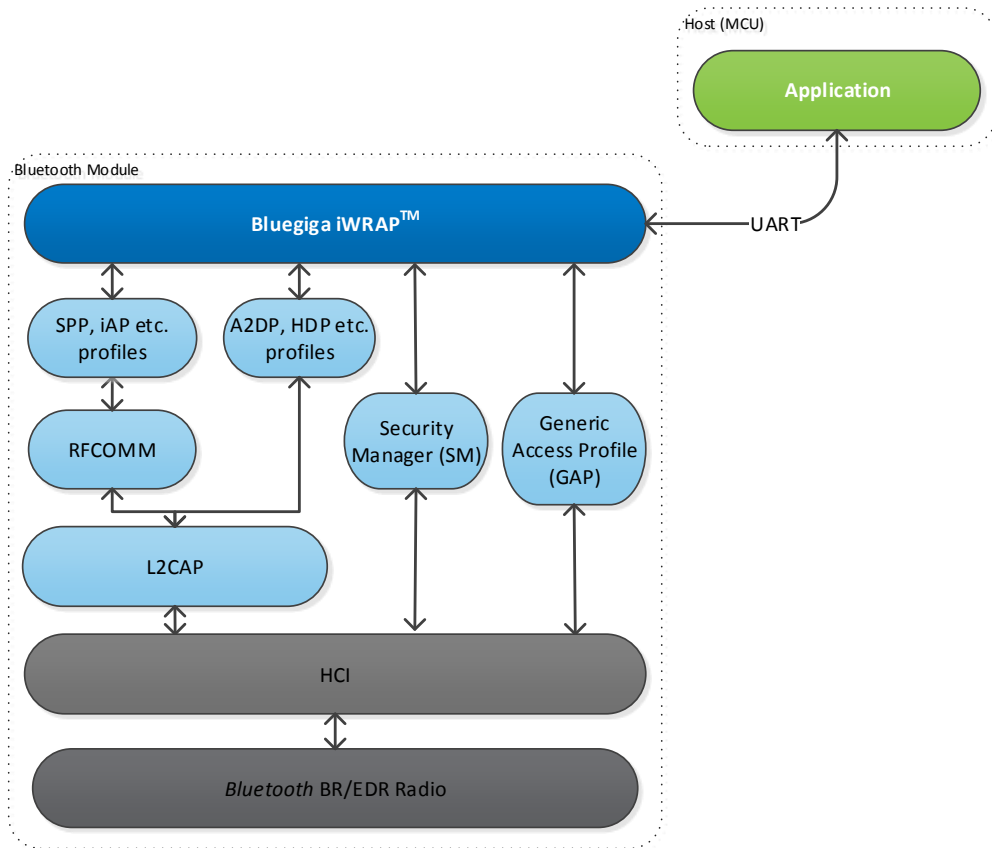
May 2015



Topics

- iWRAP Bluetooth Stack
- New features in iWRAP 6.1
- BGScript for iWRAP
- iWRAP Feature Matrix

iWRAP Bluetooth Stack



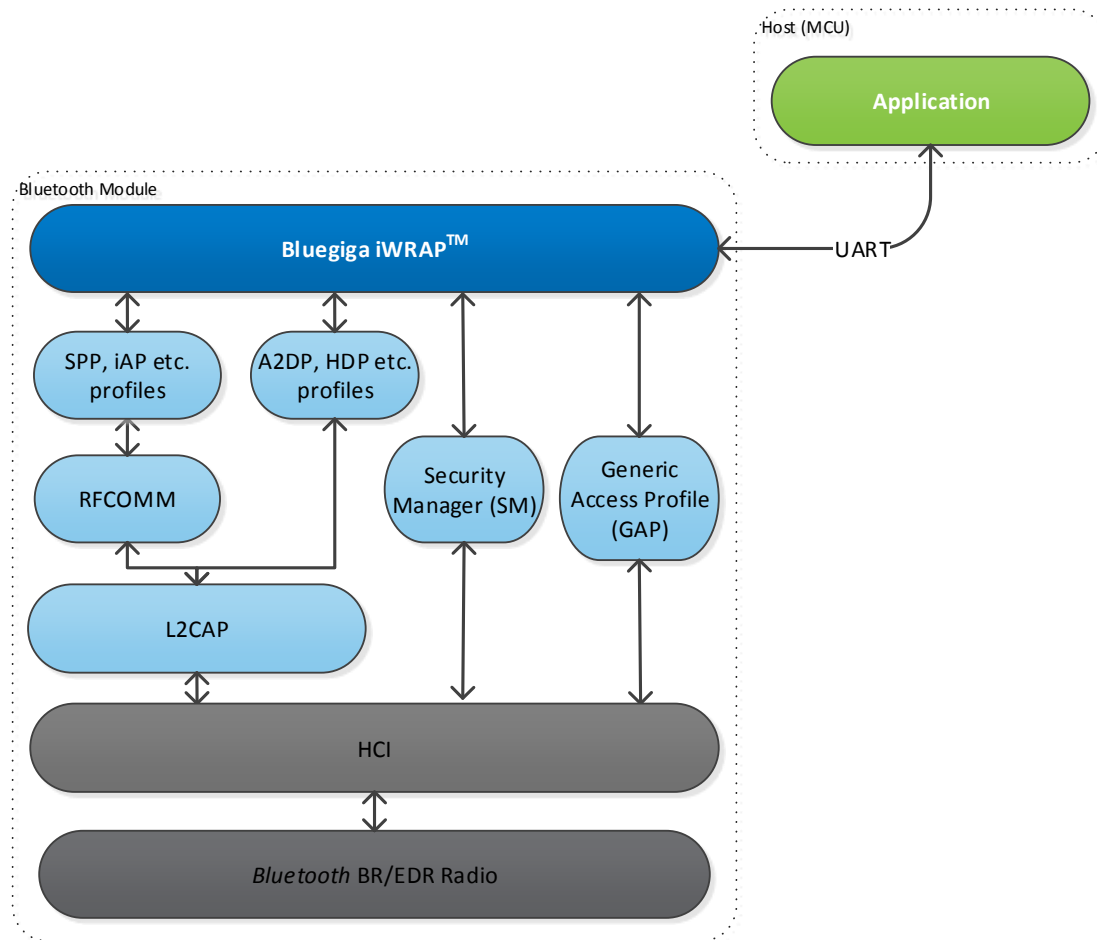
APPLICATIONS

- Cable replacement
- Stereo and hands-free audio
- Smart phone accessories
- HID

FEATURES

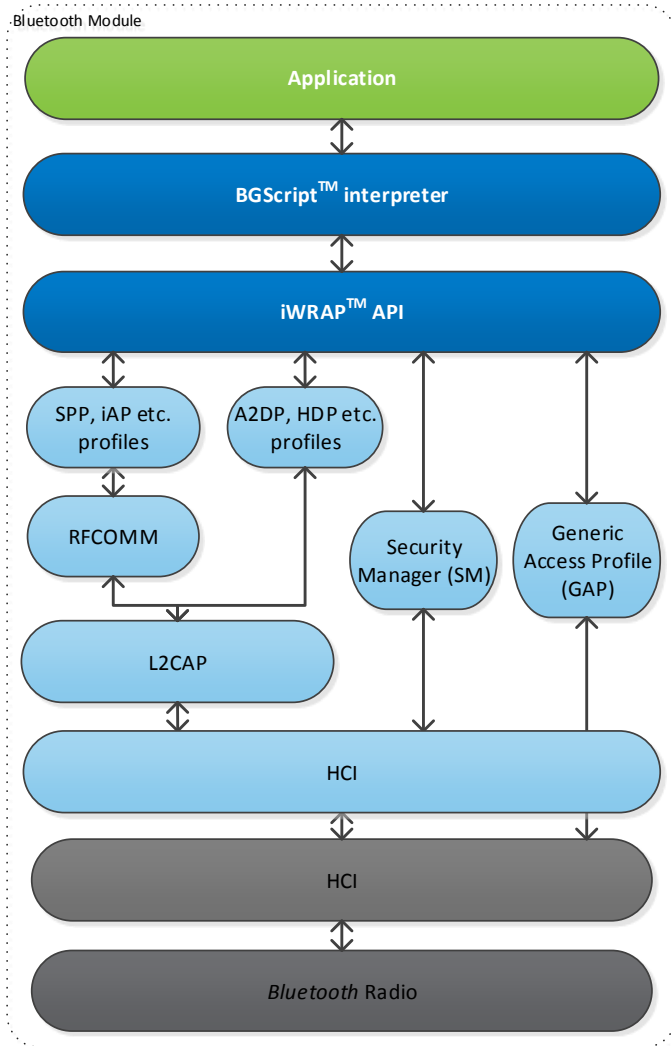
- A fully featured Bluetooth 3.0 Stack
- Implements 13 different Bluetooth profiles for data and audio
 - SPP, iAP, OPP, FTP, HID, DUN and HDP
 - A2DP, AVRCP v.1.5, HFP v.1.6, HSP, PBAP and MAP
- Up to 7 simultaneous connections and data throughput up to 550kbps
- Apple MFI complaint with iAP1 and iAP2 protocols
- Integrated SBC, mSBC, aptX®, aptX® low latency and AAC audio codecs
- Easy-to-Use ASCII based API over UART
- Field upgradable over UART

New Features in iWRAP6.1



- **Audio tone support**
 - Audio tones (files) can be stored in the Bluetooth module's flash memory
 - Playback support for stored files
- **Audio tone mixing**
 - Audio tones can be mixed with A2DP or HFP audio output
- **Enhanced reconnection logic**
 - End user configurable Bluetooth reconnection logic
- **Simultaneous AVRCP controller and target profiles**
 - Improved user experience with latest smart phones
- **I²C API**
 - Software APIs added for the I²C interface
- **BGScript™ support**
 - Script applications embedded into the Bluetooth module

BGScript™ for iWRAP

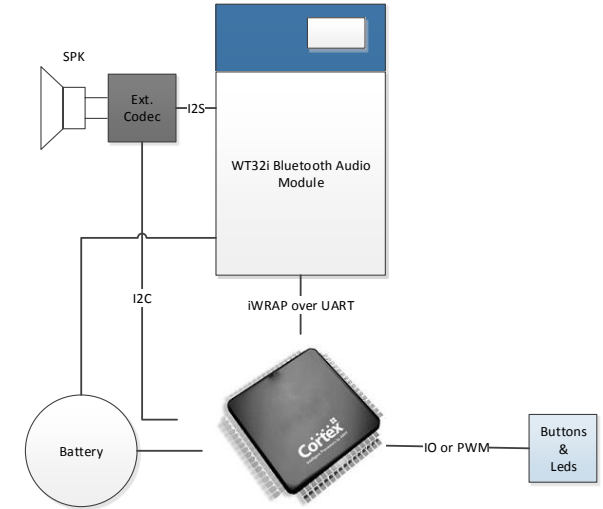


- BGScript is an easy-to-use scripting language
- Enables application programming into the Bluetooth module
- Eliminates the need for an external host (MCU)
- Provides APIs to manage both the Bluetooth stack and I/Os
- Currently supports only the WT32i Bluetooth Audio module www.bluegiga.com/wt32i
- BGScript SDK is free-of-charge www.bluegiga.com/iwrap

iWRAP + BGScript = Easy Development and Lower BoM

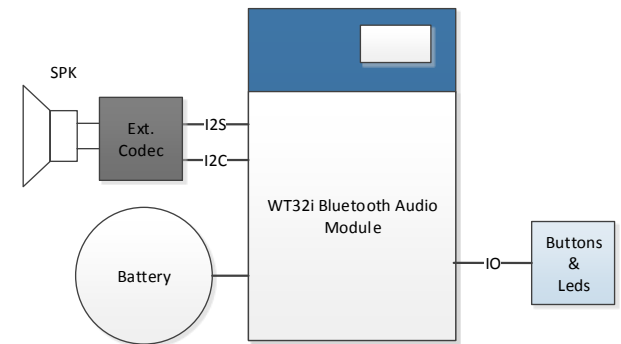
The conventional approach

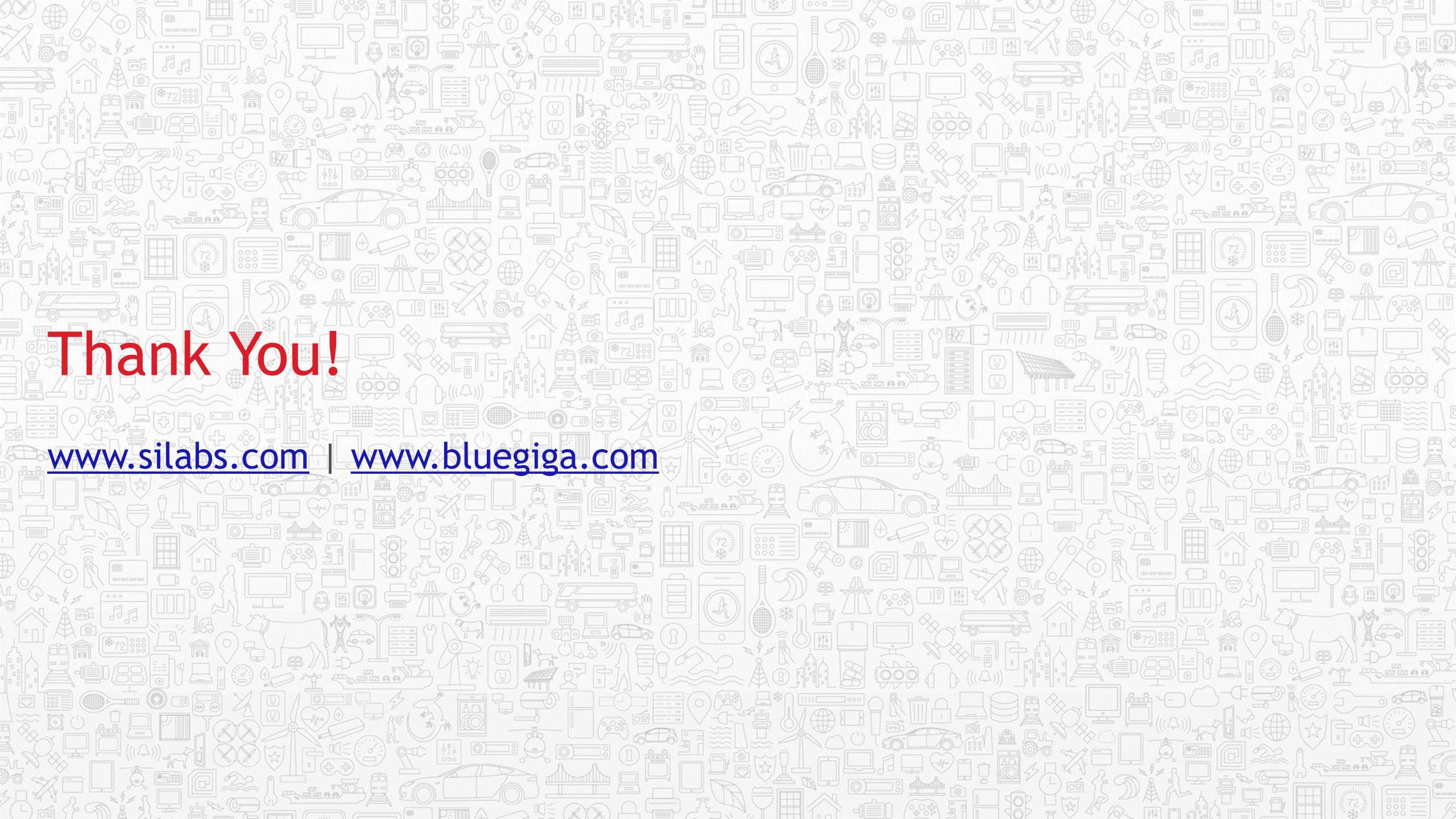
- External MCU need for application
- Adds cost and PCB size requirements
- Separate SDK needed for the MCU



The Silicon Labs approach

- No host MCU needed
- Peripherals connected directly to the Bluetooth module
- BGScript application embedded in the Bluetooth module





Thank You!

www.silabs.com | www.bluegiga.com